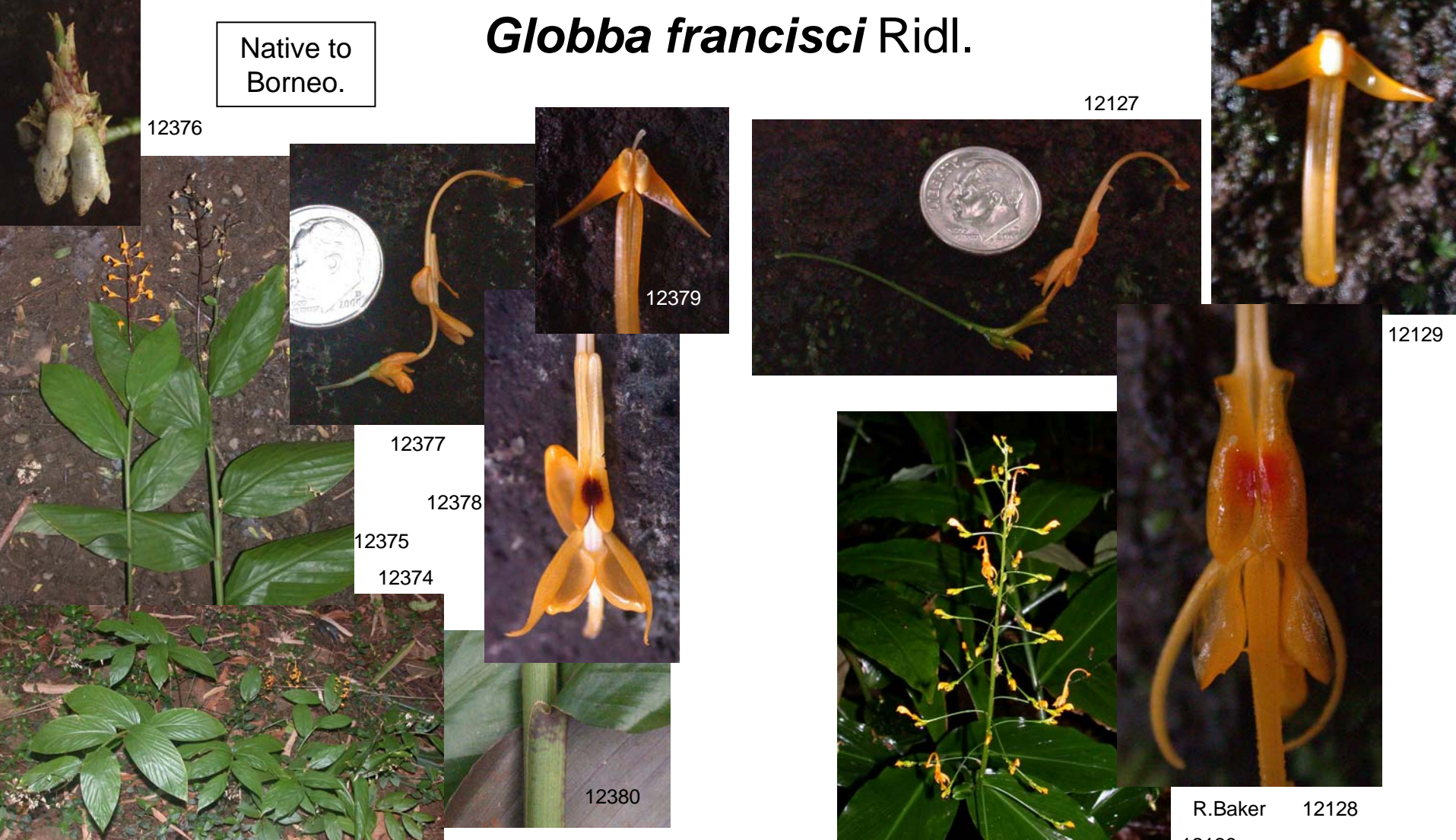


Globba francisci Ridl.

Native to
Borneo.



L-92.0224, *G. cf. francisci*, Australia: A. Carle. Voucher: KES 82 – HLA; clumping; 3.5' tall, including infl. Leaves mottled purple. Infl. 1.5' long, peduncle maroon.

Lyon L-95.0098, Sabah: J. Mood 179; Kallang Waterfall, Tenom Orch. Center; from Tony Lamb, Tenom O.C. 2; at Waimea 90p76, 91p120.