

New Discoveries in Costaceae

A Neo-Tropical Tour

Dave Skinner

www.gingersrus.com

Alto Mayo, Peru





AREA NATURAL PROTEGIDA



BOSQUE DE PROTECCION ALTO MAYO

LA COMUNIDAD DE VENCEREMOS CUIDA LA RIQUEZA DE NUESTRO BOSQUE COMO: EL AGUA, LA FLORA Y FAUNA QUE SON FUENTE DE VIDA.

PROTEGIENDO EL BOSQUE CONTRIBUIMOS A LA CONSERVACION DE LA NATURALEZA

INFORMES: Entrada carretera a Posic s/n - Rioja
Telf: 558467 - Email bpam1@hotmail.com







Costus aff. scaber
from Alto Mayo, Peru



Costus Scaber
from Rioja Valley

Reserva Bilsa, Ecuador





Just getting there
is an adventure.





Costus sp.
from Bilsa, Ecuador



Costus guanaiensis var. *tarmicus*
from Rio Palenque, Ecuador

Lita, Ecuador



Costus 'Lita Red'
Lita, Ecuador





Costus laevis is a widespread
and variable species.



Panama





Costus lasius – El Valle, Panama



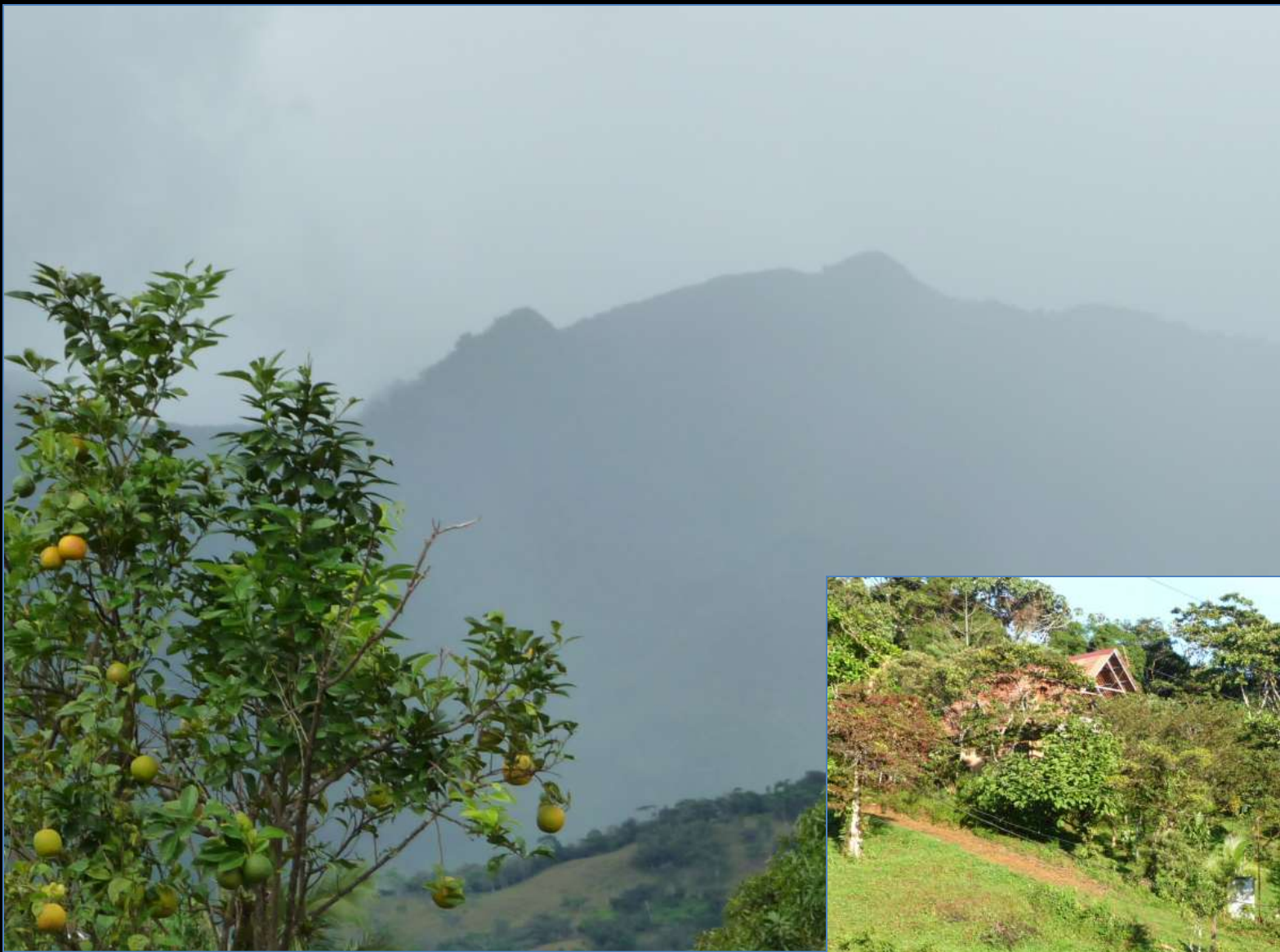
Costus lasius – “normal” hairy type



Costus lima – Colombia
Photo by Bruce Dunstan



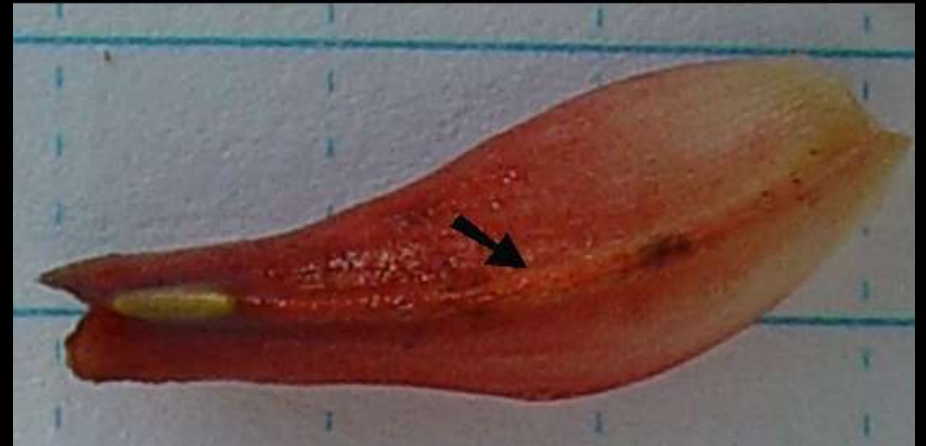
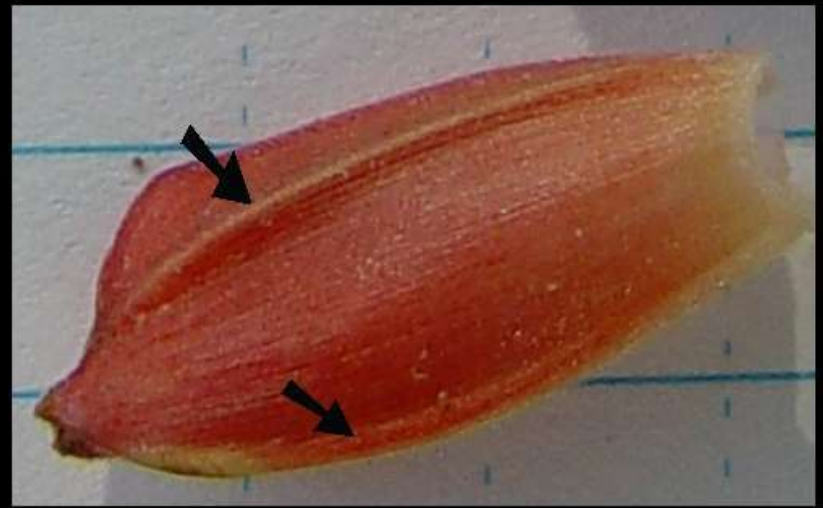
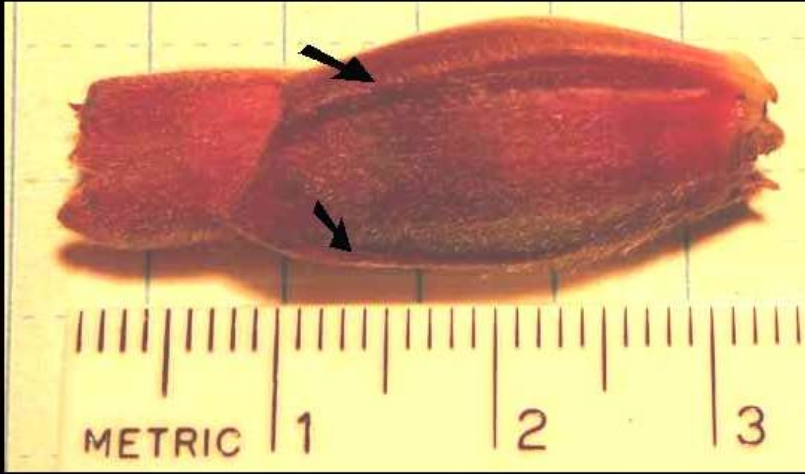
Costus ricus – Costa Rica



Cerro Mariposo
Santa Fe, Panama



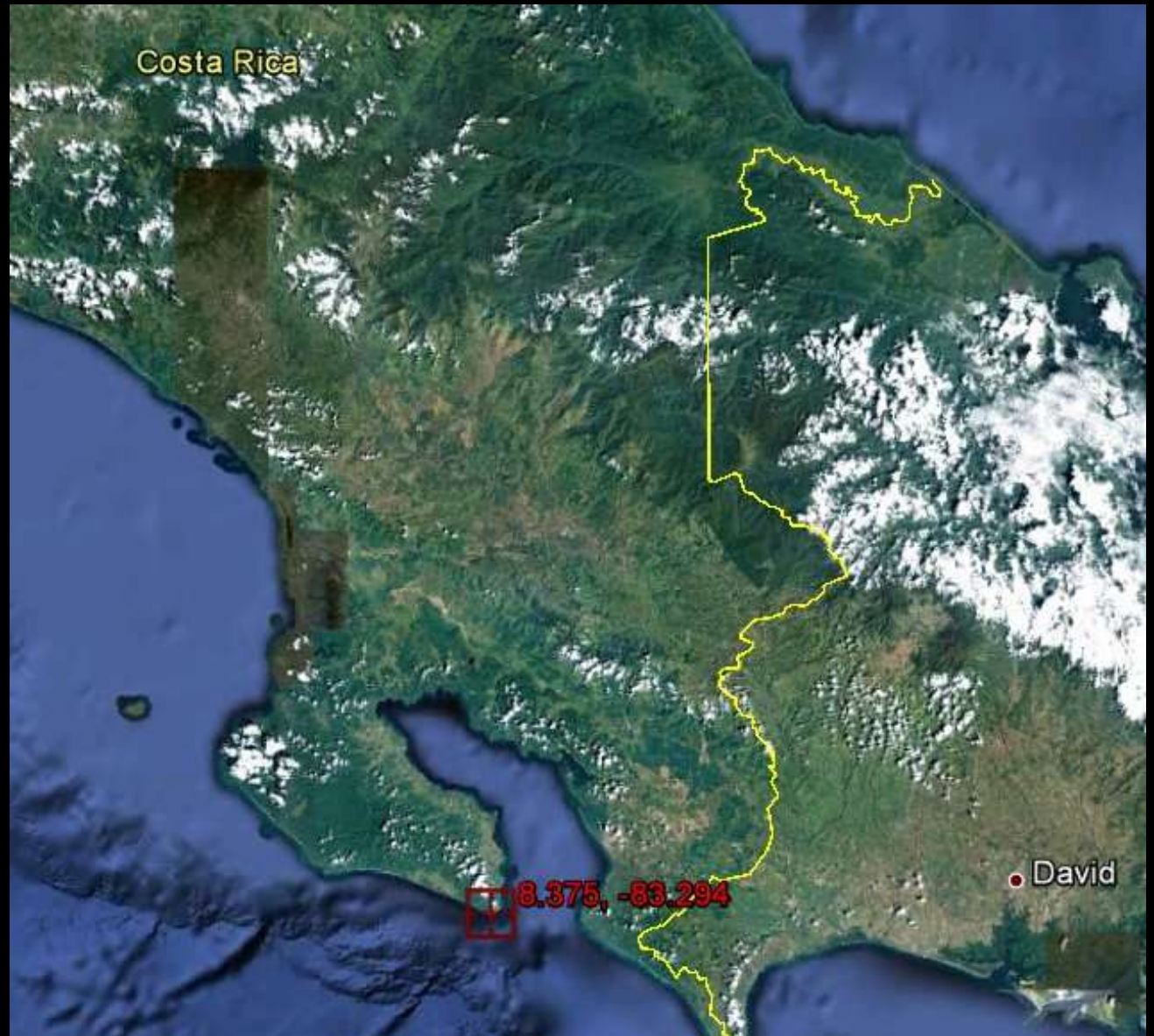




Costus sp. aff. ricus
Cerro Mariposa, Panama
with bicarinate bracteole
(2 keeled bracteole)

TOP= *Costus ricus*
2 keeled bracteole
BOTTOM= *Costus lima*
Single keeled bracteole

Osa Peninsula, Costa Rica





Cabo
Matapalo

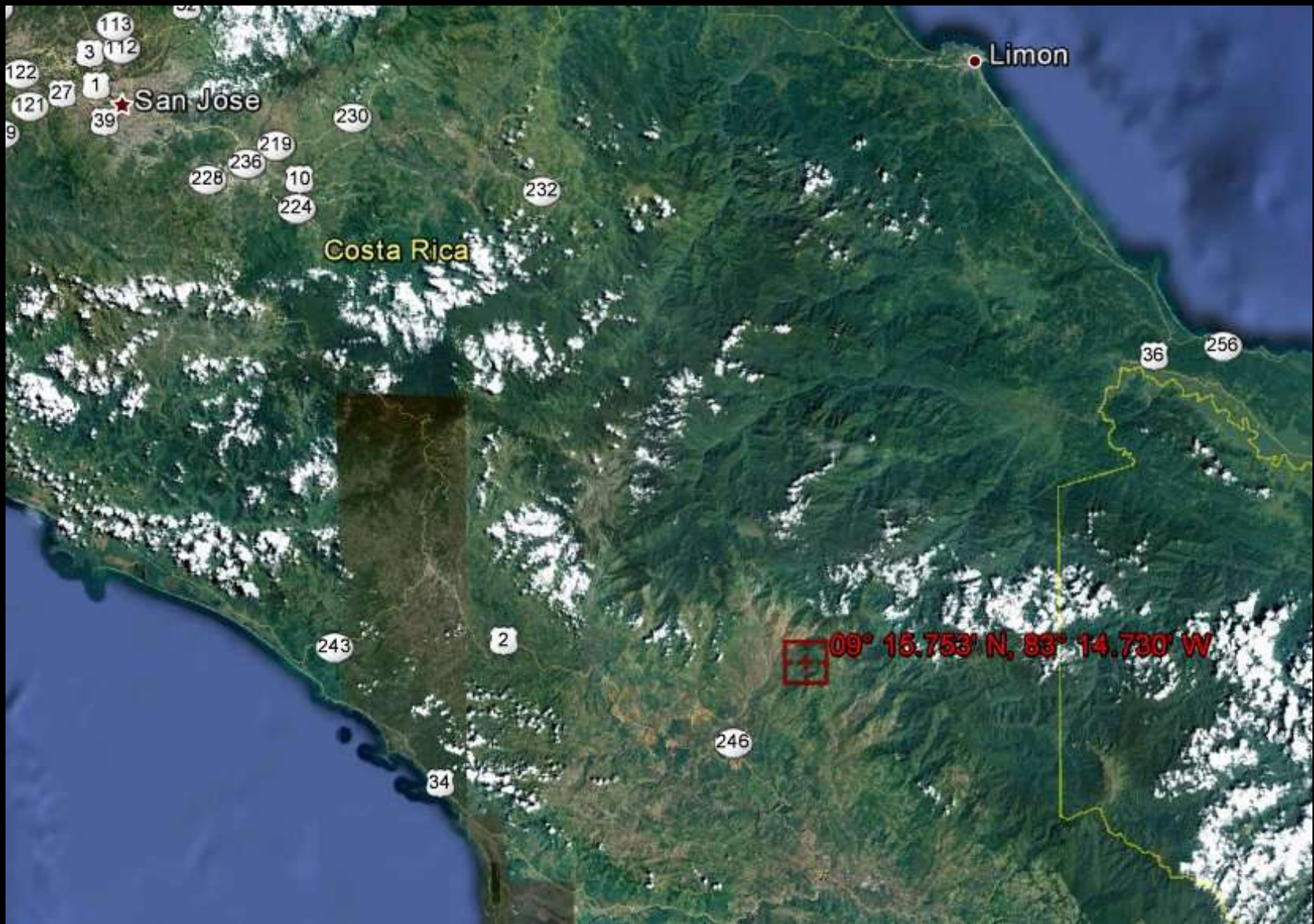
Osa Peninsula
Costa Rica





Costus sp. aff. comosus –Cabo Matapalo

Reserva Durika, Costa Rica





Comunidad
Durika
Talamanca
Mountains
Costa Rica





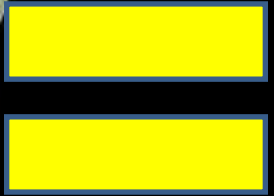
Costus wilsonii in habitat
Reserva Durika, Costa Rica



Costus wilsonii



Costus villosissimus





Costus 'Mellow Yellow'



San Jose, Costa Rica – Central Valley Area



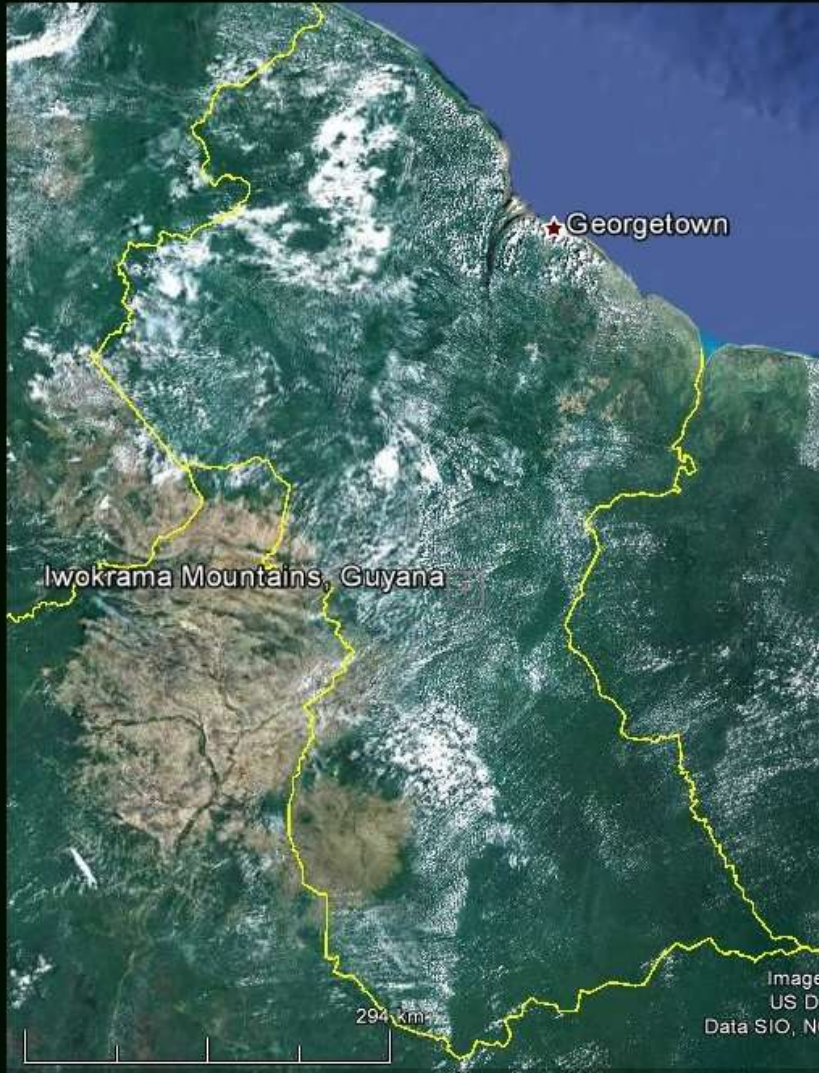
Costus barbatus



Costus barbatus

Costus comosus
var. bakeri

Iwokrama, Guyana









Essequibo River & Iwokrama Mountains



View from Turtle Mountain



Branching Habit



Cordate Leaf Base



Costus arabicus
Iwokrama, Guyana



Two-Keeled Bracteole

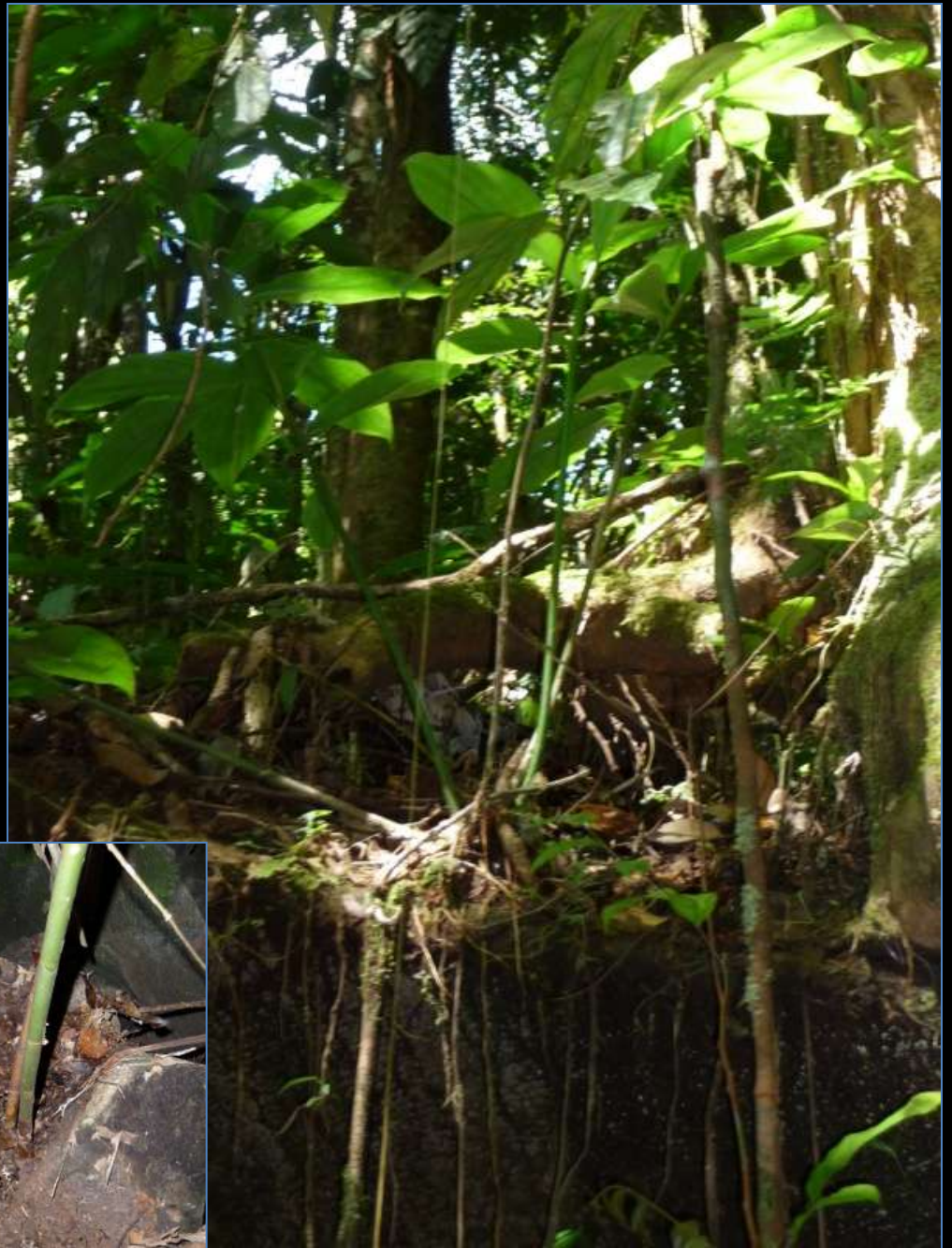
The *Costus arabicus* found at Iwokrama has “Asian” characters, the two-keeled bracteole and the calyx extending beyond the bracts as well as the branching habit seen in all *Costus arabicus*.



Fishing Guyana
Style

Luxurious Accommodations





Costus sp.
Iwokrama Mountains



Costus sp.

Collected by Marco Jimenez
Rio Numbaine, Ecuador



Costus aff. claviger
Shapaja, Peru



Costus sp. aff. glaucus
Tulipe, Ecuador



Costus glaucus
Cerro Nara, Costa Rica



Costus aff. zamoranus

Gingersrus™

Dave Skinner

skinnerd@nettally.com

www.gingersrus.com