

# *Costus arabicus* Linnaeus



8054

8053



8057

8058



8056

Eleanore Burson



8055

**Lyon L-95.0667**, from J. Mood, as *C. amazonicus*; to Wahiawa B.G.; DNA to Chelsea Specht. Planted in **H37** (shown), **mauka of *Allagoptera*** (Apr 96); and **near H4-9-5, among rocks between streams** (May 98).

The typical form is “the most common representative of the genus in tropical South America and the Antilles ... except for the Andes Region and Central Brazil.”: Maas (1972) Fl. Neotrop. 8: 57-61.

**MORE**



# *Costus arabicus* Linnaeus



18201



18202

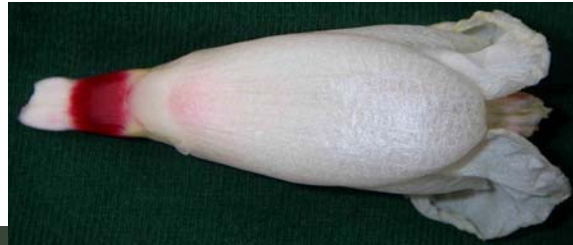
18211



18212



18203



18205



18204

18206



Lyon L-95.0667



18210

R.Baker



18207



18208



18209

**MORE**



# *Costus arabicus* Linnaeus

18248



18249 R.Baker



We need pictures of  
flowers.

**Lyon L-78.1322** , Brasil: Amazonas, Rio Negro; Madison 6055A, w/ H. Kennedy, as *C. sp.*; ID by P. Maas, based on KMN 3014. Voucher: KMN 3014 (w/ spirit) - U only, KMN 3234 – HLA.

From KMN 3234: Stems 2.5-4 m height, 2.5 cm diameter at base, often branching from old inflorescence. Leaves dark green above, purple beneath, obovate-oblong, 12-30 cm long; sheath red toward base of stem. Inflorescence ovoid, sessile, 6-10 cm long, 3-4 cm diameter; bracts green without, red within. Corolla white, 6-7 cm long; staminode 9 cm long, white; labellum white, ruffled, extending 2 cm beyond the corolla; the lip yellow, shorter than the 2 lateral lobes; calyx bright red, 2 cm long, the lobes green.